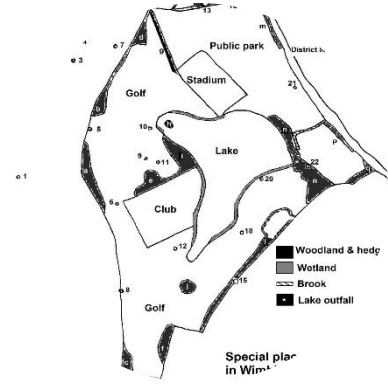
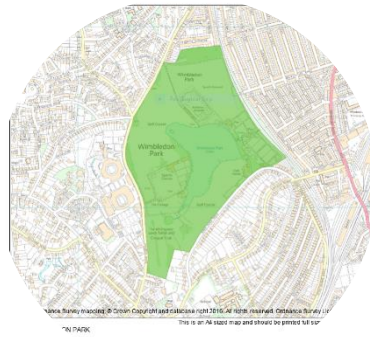


Friends of Wimbledon Park

Friendsofwimbledonpark.org



SGRA 2023-09-26

Updates

Wimbledon Fortnight Report

sent to LBM & AELTC

- A. This year Wimbledon Fortnight (AELTC) had many problems including a huge lack of toilets. (Estimates of 12000 people on day 1).
- B. A lot of people urinating in the bushes and under the trees. Also, evidence of people defecating.

Requested:

- 1) Car parking to cease from 2024.
- 2) AELTC and LBM to provide a good reason why camping should continue in the public park?



Insect Declines and Why They Matter

<https://www.wildlifetrusts.org/news/insects-urgent-action-needed>

A new report, *Insect Declines and Why They Matter*, by invertebrate expert, Dave Goulson, Professor of Biology at the University of Sussex, commissioned by an alliance of Wildlife Trusts in the south west,

- concludes that drastic declines in insect numbers look set to have far-reaching consequences for both wildlife and people.
- highlights the severe effects of the declines on insect-eating birds, bats, and fish, and the cost to society due to lost revenue and broken ecosystems.
- **“The consequences are clear; if insect declines are not halted, terrestrial and freshwater ecosystems will collapse, with profound consequences for human wellbeing.”**

State of Nature in England

- 1) England is one of the most nature-depleted countries in the world due to its long history of industrialization and land use changes over millennia. Large areas of habitats have been lost with 99.7% of fens, 97% of species-rich grasslands, 80% of lowland heathlands, up to 70% of ancient woodlands and up to 85% of saltmarshes destroyed or degraded.
- 2) The impacts on species have also been severe, with a quarter of mammals in England and almost a fifth of UK plants threatened with extinction.
- 3) This was published in July 2022 and is a wake-up call if one is still needed!
Both LB Merton (10/07/2019) & LB Wandsworth (17/07/2019) have declared a Climate Emergency
- a) **Wimbledon Park has many special places for nature such as its ancient and historic woodlands, hedges, and lake (lake could be enclosed with a nature reserve). These can be enhanced for the benefit of species and visitor enjoyment.**
- b) **Our approach of improving landscape, biodiversity and habitat can assist in a small way.**

A tree and woodland strategy for Wimbledon Park, March 2022.

Dave Dawson



- 1) This strategy aims to provide a framework to assist the tree, shrub and woodland initiatives in the public Wimbledon Park (“park” below).
- 2) It starts with the headlines of the framework and then moves on to the background, history and the principles underpinning the strategy.
- 3) Comments are sought on this strategy, so that a programme can be taken forward with community support

Discarded fencing in Horse Close Wood



Wimbledon Park Volunteers (WPV) look after historic Horse Close Wood.

Flower beds

Hornbeam whip not growing and flowers disappearing



Considering creating flower beds around these trees.





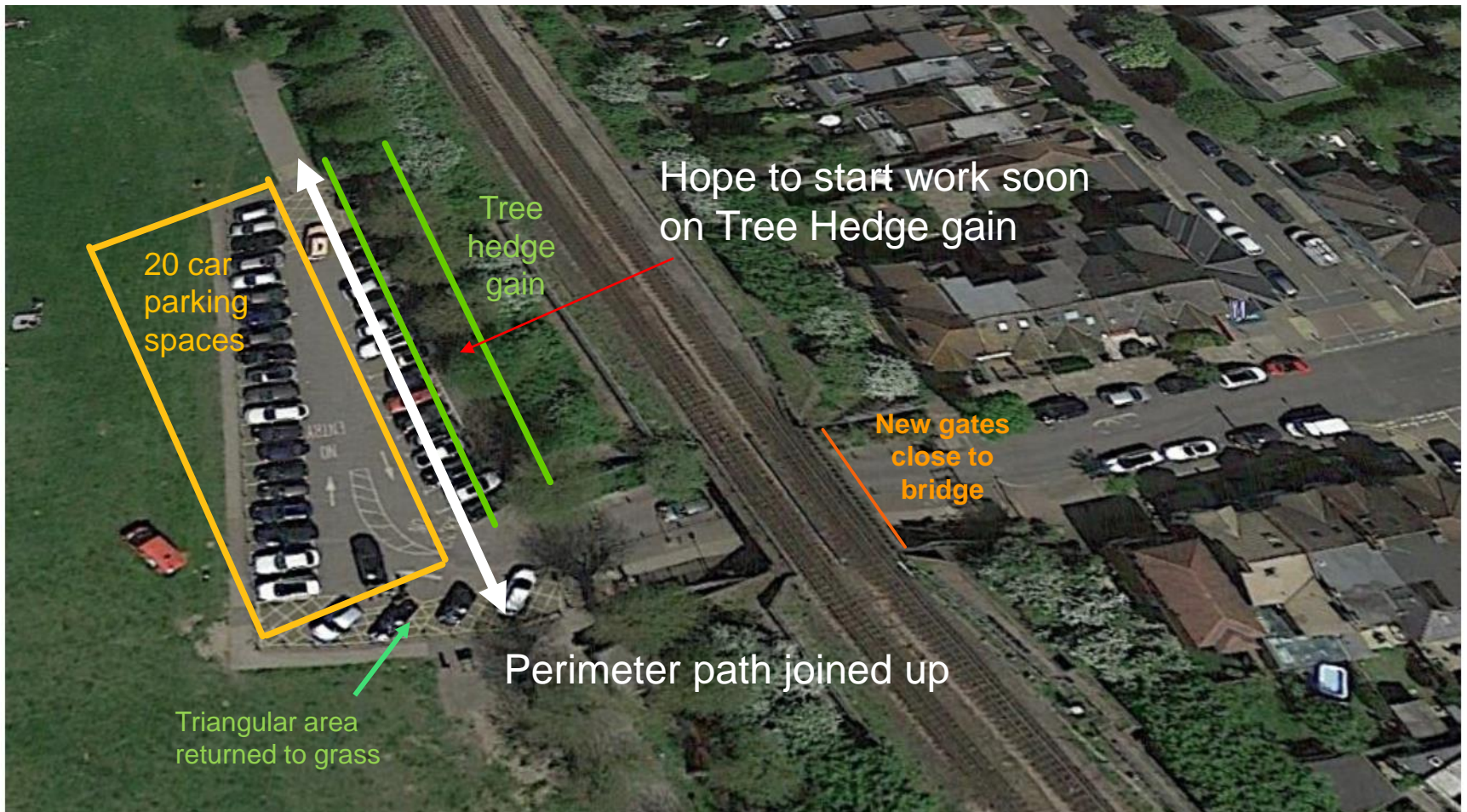
From Grim to Joy



Next: the outline.

Aerial view of RR car park

with existing 35 spaces including 3 disabled & simplistic overlay of proposals



Merton & Wandsworth Planning decisions

LBW 2021/0432 approved on 11th May 2021 subject to conditions.

➤ <https://planning2.wandsworth.gov.uk/iam/IAMCache/5446257/5446257.pdf>

LBM 21/P2657 granted 25th October 2021 subject to conditions.

➤ https://planning.merton.gov.uk/MVM.DMS/Planning%20Application/1000115000/1000115430/21P2657_Decision%20Notice.pdf

❖ **Historic England commented:**

❖ ‘It would also help to address issues contributing to the Registered Landscape's inclusion on the Heritage at Risk Register’.

❖ **Estimates for the project for Revelstoke Road entrance improvements have been obtained.**

❖ Full details of this project can be seen in <https://www.friendsofwimbledonpark.org/fowp-bulletin-2022-10-29>

Public Lakeside Walk

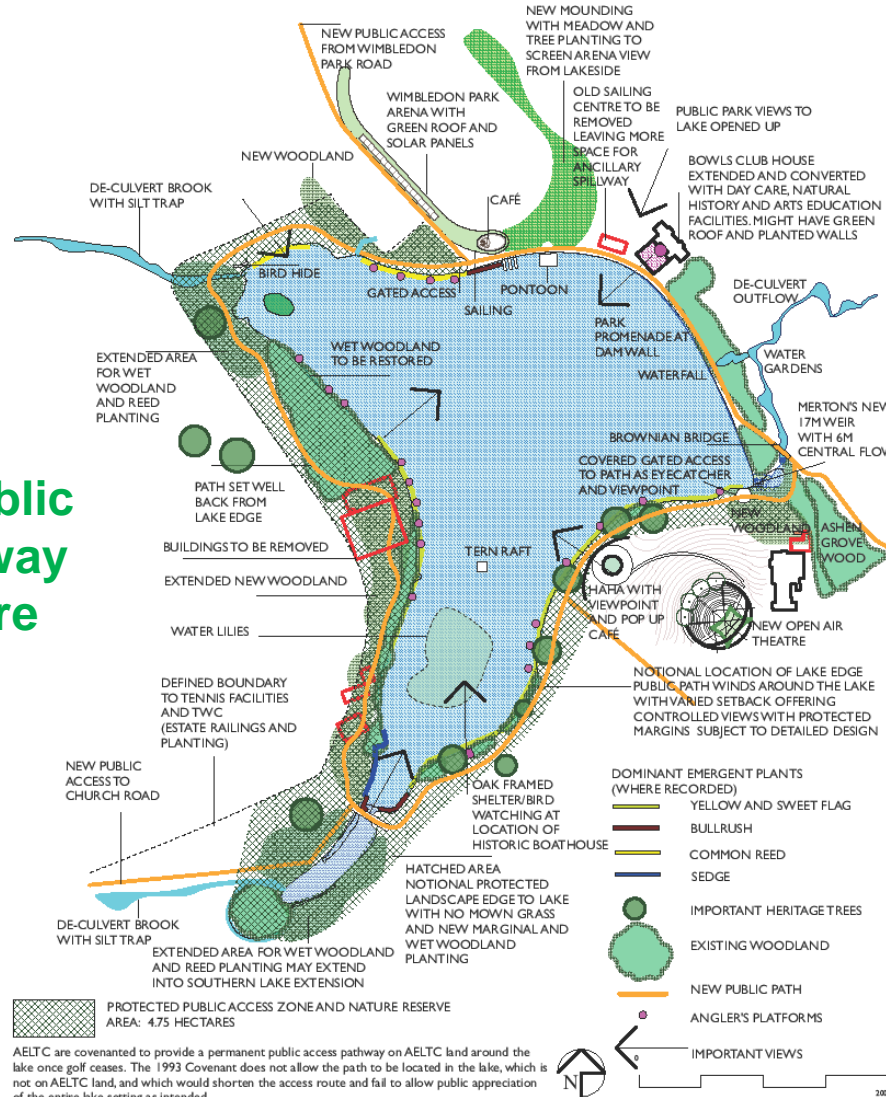
Request

- 1) Regarding the covenant which relates to a public walkway around the Wimbledon Park Lake. Over the entire summer the golf course heritage land has deteriorated and the community wonders whether the AELTC will do anything to improve the environment. We have noted that they want to busy themselves removing trees and would like to encourage them through you to create the long-promised lakeside walkway now.
- 2) The Friends of Wimbledon Park strongly urge that Merton Council engage with the AELTC to challenge their intention to delay dedicating the area until 2041. We request, on behalf of the Community, that the public lakeside path should be dedicated now, immediately.
- 3) We also have suggestions about improvements to the layout which will truly enhance the environment which everyone is concerned about.

Reply

- a) *We are not in a position to dedicate a publicly accessible pathway immediately, (I believe the current golfing lease is still extant) but we do intend to obtain stronger public access around the lake if the opportunity arises. You are quite right to place emphasis on preserving habitat biodiversity and provisionally, subject to expert advice, agree with the suggestion outlined under Future Opportunities at a) below that any future footpath should include generous setbacks to protect wildlife and shrubbery at the water's edge.*
- b) *I note your comments about what you term 'blots on the lakeside landscape.' The Council will do what it can in future to enhance views, though not all factors mentioned are within the Council's power to change. Naturally, any future proposals by Merton of significance will be consulted upon.*

Example of public lakeside walkway within a nature reserve.



AELTC are covenant to provide a permanent public access pathway on AELTC land around the lake once golf ceases. The 1993 Covenant does not allow the path to be located in the lake, which is not on AELTC land, and which would shorten the access route and fail to allow public appreciation of the entire lake setting as intended.

To protect the lake margin and existing trees, and to comply with planning policy, the public access path must be set back from the lake shore on AELTC land. Land between the Wimbledon Club and the lake edge is very restricted. The Wimbledon Club should be offered a land exchange along with new improved facilities with the removal of eyecore structures close to the lake shore so that the historic Capability Brown setting and lake profile is safeguarded and enhanced.

PROTECTION OF THE LAKE EDGE AT WIMBLEDON PARK