

Friends of Wimbledon Park

Friendsofwimbledonpark.org



SGRA 2022-09-27

Joint Statement:
Stephen Hammond MP (MP For Wimbledon) Fleur Anderson MP (MP For Putney)
AELTC show court development on Wimbledon Park
MONDAY, 1 AUGUST, 2022

- 1) We know that many of our local residents in Wimbledon, Southfields, and West Hill are continuing to follow the development of proposals from the All-England Lawn Tennis Club closely. We have each met with local residents, leaders of local Residents' Associations with the Chair and CEO of the All-England Lawn Tennis Club, and held public meetings on this issue.
- 2) We both agree on the importance of protecting our local green spaces, responding to the climate emergency, and carefully and rigorously scrutinising all proposed developments that will impact the communities we represent.
- 3) We therefore jointly object to the AELTC planning application for building an 8,000 seater stadium and 38 temporary use grass courts on Metropolitan Open Land. Local residents appreciate the existing world class sports event in our area, however there is strong local opposition to these plans. The new area of Wimbledon Park is a small part of the development which will not have any protection against future development and will be mainly closed to the public for at least 5 weeks each summer. The size and mass of the new show court stadium is of an inappropriate scale to be built on Metropolitan Open Land.
- 4) **We therefore request that when Merton and Wandsworth Councils considers the application, they hold a special full planning committee to discuss only this issue, and we urge both Councils to reject the proposal.**
- 5) We will both continue to work with our residents in Putney and Wimbledon constituencies, and with the All-England Club, to find a proposal that meets our criteria for a positive development for everyone.

3

The Town and Country Planning (**Environmental Impact Assessment**) Regulations 2017 Schedule 4 Information for Inclusion in Environmental Statements

- 2. A **description of the reasonable alternatives** (for example in terms of development design, technology, location, size and scale) studied by the developer, which are relevant to the proposed project and its specific characteristics, and an indication of the main reasons for selecting the chosen option, including a comparison of the environmental effects.

The **description of the likely significant effects** on the factors specified in regulation 4(2) should cover the direct effects and any indirect, secondary, cumulative, transboundary, short-term, medium-term and long-term, permanent and temporary, positive and negative effects of the development. This description should take into account the environmental protection objectives established at Union or Member State level which are relevant to the project, including in particular those established under Council [Directive 92/43/EEC\(1\)](#) and [Directive 2009/147/EC\(2\)](#).

Alternatives need to be considered!



4

Details Of Proposals And Ideas For The Future Of The Heritage Wimbledon Park Landscape

by

The Capability Brown Society - March 2021

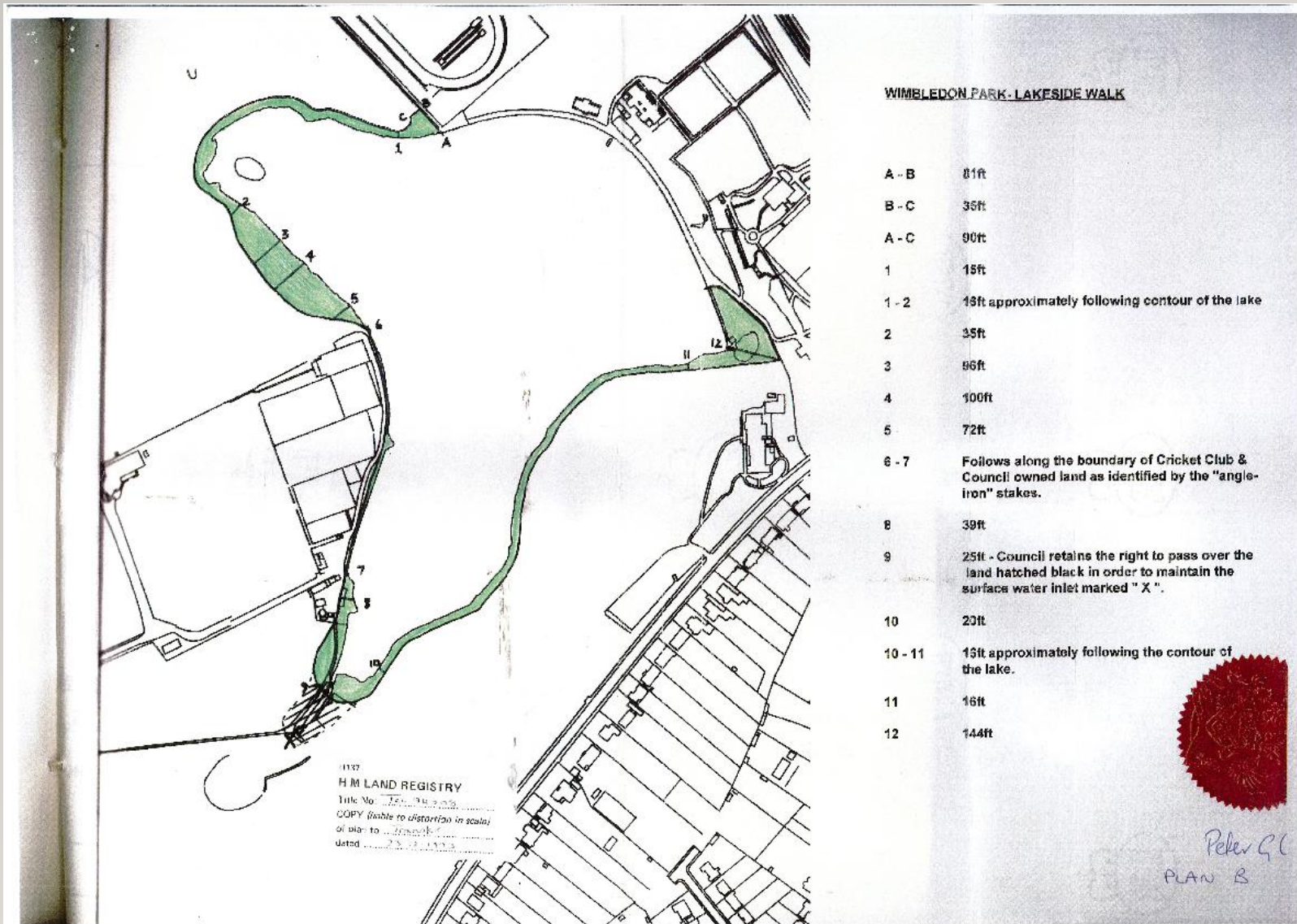
<https://www.friendsofwimbledonpark.org/about/key-documents>

- 1) Wimbledon Park is registered with Historic England as a Grade II* park and garden. **It needs to be considered in its entirety by all landowners when bringing forward development proposals.**
- 2) Development within one ownership will have an impact on the others, requiring the entire parkland to be considered as a single entity. This might determine the best location for any new intervention.
 - a) For example, is anywhere on the golf course really the best location for new All England Lawn Tennis Club (AELTC) tennis facilities?
 - b) Should public access around the lake be restricted only to a narrow lakeside strip?
 - c) Should new public sports and community facilities be located and managed only on the public park land?
 - d) What is really best for the conservation of this fragile heritage and natural landscape while securing its sustainable future as an international and regional centre of sporting excellence?

5

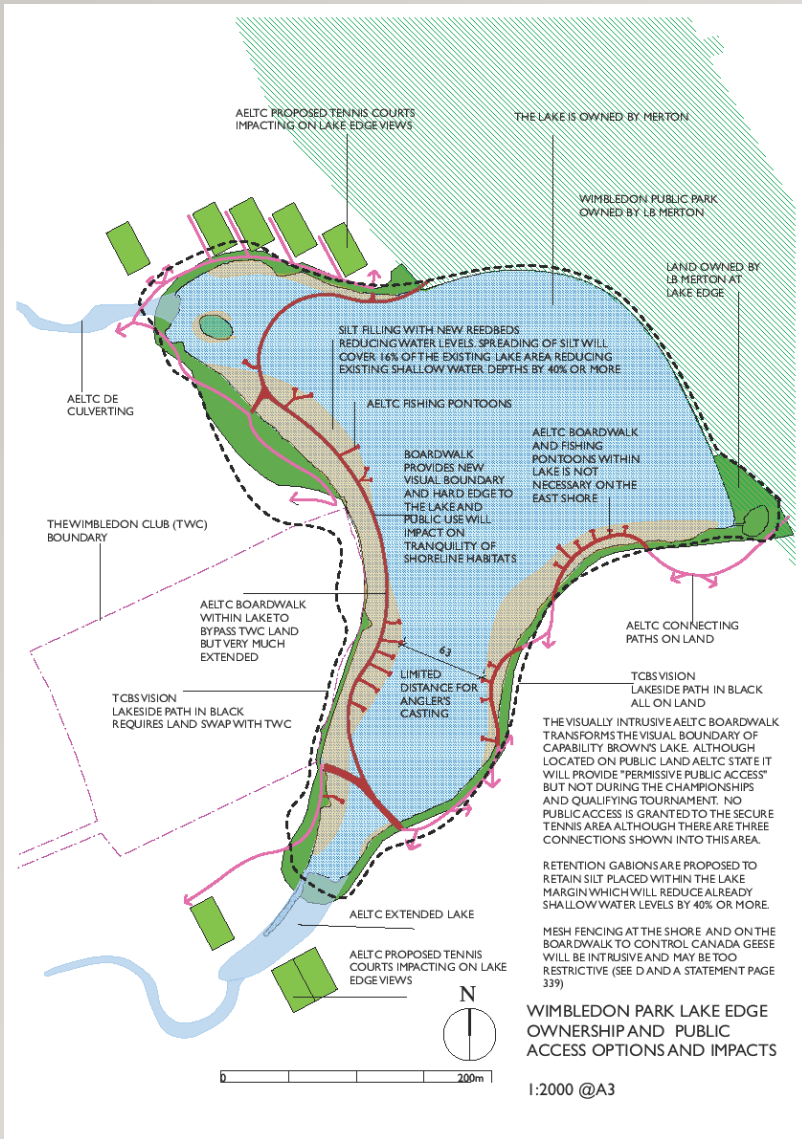
A Vision is described for the 61 ha Heritage Park for discussion

- 1) This is particularly important given the fact that the parkland is “registered at risk”.
- 2) The Vision for the heritage parkland takes care to consider that proposals are beneficial for the wider parkland, for the community and for the needs and interests of each landowner, while ensuring that the most visually significant areas of the historic parkland are restored or conserved with the least possible built development and the least possible visual impact.
- 3) A once in a lifetime opportunity to make improvements for the next 150 years!
- 4) An example follows based on the 1993 covenant.



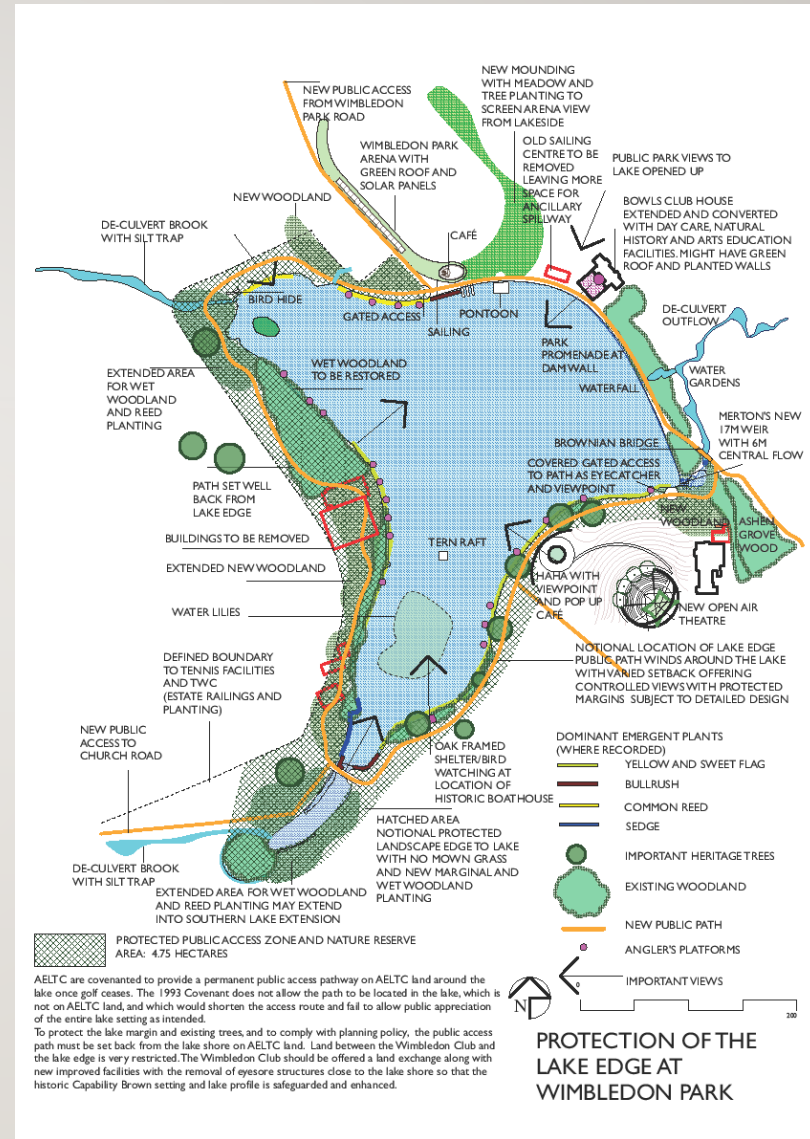
Plan of the Wimbledon Park public lakeside walk from the 1993 covenant between AELTC & LBM.

Note: The Wimbledon Club (TWC) are not party to this covenant.



A permitted boardwalk on LBM land

Part of AELTC WPP application. Blots on lakeside landscape remain.



Need to reach agreement with the 3 owners. Blots on lakeside landscape are relocated.

A public lakeside walk within a 4.75 ha nature reserve.

8

Desilting – a separate application

- 1) Extending the lake to its southern historic extent is welcome, but **de-silting the lake should be a separate application** and set out a precise methodology for how this is to be undertaken and with a better assessment of the ecological impact, benefits and necessity.
- 2) This has not been adequately examined in the current application. New reedbeds do the opposite of desilting as they require shallow water (and some filling with 1,700m³ of unfortunately relocated silt), have very questionable ecological advantage and a visual loss of Capability Brown's carefully contoured lake margins and open water

Events and damage to the Great Field

Have written to LBM & AELTC requesting that the Wimbledon Fortnight car park cease forthwith



-
- 1) AELTC & idverde decided to leave re-grassing until September. Discussions continuing.
 - 2) Events prevent Junior Park Run, St Cecilia's PE lessons and many other activities in the Great Field which is a free to use space.

Revelstoke Road Entrance Improvements

- 1) Still having difficult discussions with TfL leading to delays and costs. An invoice of £469.80 based on hours worked without receiving the estimate for wing wall fencing relocation.
 - a) This has led to invoking the complaints procedure.
- 2) Meanwhile will adopt a phased approach with the section including the gates being phase one.
- 3) Have applied for a grant for phase one from South Western Railways and hope to get a response by the end of this year.

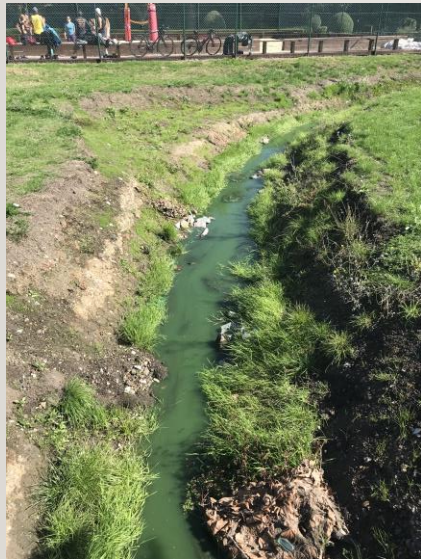
Examination Of Merton's Local Plan. Notice Of Independent Examination Hearing. Town And Country Planning (Local Planning) (England) Regulations 2012. Statutory Instrument No.767 Regulation 24. The hearings will be divided into two stages:

- 1) Stage 1 completed.
- 2) Stage 2 of the hearing sessions will commence at:
 - 1) 1400 Tuesday 4th October on Wi3 and
 - 2) 1400 Wednesday 19th October 2022 concerning Wimbledon Park being included in Wandle Valley Regional Park.

As there's no way of telling if blue-green algae is toxic just by looking at it, keep your dog away from lakes and ponds where it may be present.

<https://www.pdsa.org.uk/pet-help-and-advice/looking-after-your-pet/puppies-dogs/blue-green-algae>

Green/Blue Coloured Water



Blue-green algae,
or
'cyanobacteria', is
completely
natural. – it's a
type of bacteria
that looks like
algae when it
clumps together.

Clear Water

