



Southfields Grid
RESIDENTS' ASSOCIATION

*Making a difference
to life on the Grid*

GRID NEWS

Summer 2021

Delivered free to every home and business in Southfields Grid

BLOOMING LOVELY! LEVERS TOP FRONT GARDEN AWARDS

By Amelia Obertelli-Moriarty, chair of judging panel

What an amazing time we had judging the annual SGRA Front Gardens Awards. The sun either beat down on us as we pounded the Grid streets, or we got soaked by downpours when handing out awards! Nonetheless we saw some delightful gardens, amazing displays in pots and window boxes and alluring hanging baskets. It is very evident that many Grid gardeners are highly creative and have invested much time, effort, and love into their front gardens.

Given all this talent it was hard to select winners from such a diverse and gifted group, but after much deliberation a winner and two runner ups were chosen. Warmest congratulations to them all.

Overall winner - 94 Elsenham Street. £25 garden centre voucher and silver platter.
Runners-up - 90 Revelstoke Road and 106 Pirbright Road. £15 garden centre voucher each.

Let's meet our winners Jo and Richard Lever. The couple said they were 'delighted but shocked' to have won. Their garden has been given bronze and silver awards over the past few years. This year they have not only struck gold but also the overall winner award, a fantastic achievement.



OVERALL FGA WINNERS
JO AND RICHARD LEVER

It is a most charming garden with a lovely balance of plants and colours in pastel shades of purple, pink, and white intermingling with the various shades of green. Jo and Richard set out to create a 'bee friendly' garden, and they derive much pleasure from watching the bees, butterflies and other wildlife that frequent the garden. Delicate geraniums, daisies, foxgloves, and salvias grow in harmony with privet and luscious ferns to create a 'cottage garden' effect.

By the front fence there is an ornamental crab apple tree, which attracts many birds and is likely home to many insect species. The small shed with its sedum covered roof completes the idyll. The garden design is thoughtful, and it has a relaxed, non-contrived 'feel' which generates serenity and peace. Anyone passing by or visiting the garden will love it! It was lovely to meet Jo and Richard in their front garden. We look forward to admiring their garden for many years to come.

See more about the Awards on page 13.

TENNIS PLANS SERVE UP A STORM

The All England Club (AELTC) has radical plans for the development of their former Wimbledon Park golf course which will change our local area permanently. It includes plans to build an 8,000 seat show court and 38 practice courts as well as create a new local park. This has precipitated a hive of activity within the SGRA and other local Residents' Associations. The full consultation can be seen at www.wimbledon.com/consultation. In response the SGRA has formed an advisory working group comprising Simon Wright (Chair), Charles Runcie, Margaret Brett, Ben Foreman, Kez Garner and John Rubinstein. Its aim is to help the SGRA membership come to a collective position on the AELTC's proposals.

An online meeting of the SGRA membership was held via Zoom on Thursday 8th July.

In parallel, nine local Residents' Associations affected by these proposals are collectively planning to produce a leaflet to be delivered to local households as soon as a formal planning application is submitted by the AELTC to Merton and Wandsworth Councils in late July. The aim is to make sure everyone knows what is going on, and how they can make their views known. If you are concerned by these plans what can you do?

1. Contact at the SGRA working group on info@southfieldsgrid.org.uk
2. Respond to the AELTC's third consultation

using the weblink above.

3. Watch out for details of the planning application made by the AELTC to both local councils and respond to this when it happens.

For more information contact Simon Wright at simon@ofplus.com

Merton Council have also opened a consultation on the closure of Church Road for this year's Championships. If you have any comments, do submit them using the simple form on the council's website, which you can find by searching for 'Wimbledon Championships experimental traffic order' at www.merton.gov.uk

EDITOR'S LETTER



Charles Runcie, SGRA Chair

Welcome to this summer issue of Grid News. Whether it's the easing of Covid-19 regulations, highway improvements around our centre, those plans for Wimbledon Park or the closure of familiar local shops, there always seems to be something happening in our little part of London. Put it this way, it has not been hard to fill these pages! Our local MP's new chief of staff emailed me to say "after 7 years of working in parliament I can honestly say it's the best community publication I have seen!". A super tribute to everyone who contributes items.

This time of year is when we ask for your annual contribution to SGRA funds, as our financial year runs from June-May. This is to allow us to "make a difference to life on the Grid", whether putting on front garden awards, the seniors tea party, newsletters, meetings or helping finance local initiatives. You'll find full details at the back page of this issue about the ways to pay, and I can assure you every single penny is carefully spent.

Our street reps are really important people in the SGRA. We're keen to have at least two on every street, so if you are interested in helping us out, particularly live on Revelstoke Road, do get in touch with our vice-chair Gerard Sebastian at ggerard.sebastian@gmail.com.

Our final SGRA public meeting before the summer break is Tuesday 27th July at 2pm via Zoom. If you have never been to one, email info@southfieldsgrid.org.uk for a link, and see you then.

charles@charlesruncie.co.uk



CARTOON BY GERARD

RIFLE CLUB AND ALLOTMENTS THREATENED

By Margaret Brett

Did you know Southfields has a rifle club for small bore target shooting, and tucked alongside it there is a little gem of productive open green space dedicated to 11 allotments and 3 beehives?

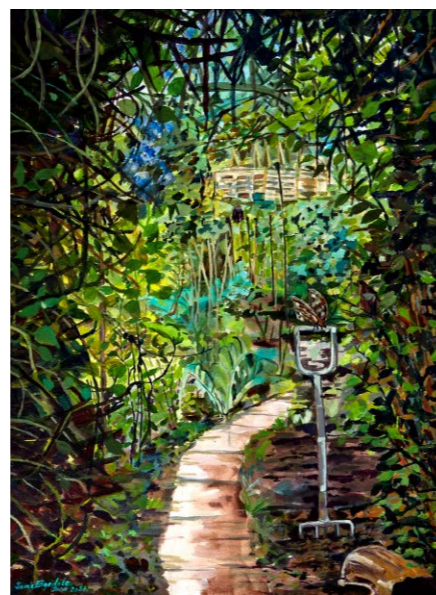
The Wimbledon Park Rifle Club, originally formed in 1902, moved to their site off Granville Road in 1904 on what appears to have been open farmland alongside the railway embankment. It has one of the few 100 yard ranges in London. It is a very successful club, with members representing the country at Commonwealth Games and other international competitions. The allotments are ancillary to the club, and the space they occupy provides a buffer preventing sound from the ranges penetrating into the adjacent back gardens of Pulborough Road.

Over the past 30 years the club has fought off two attempts by the freeholder to develop it, and faces another planning application expected soon. The freeholder wants to build a children's nursery on the site and create a smaller club range area alongside. The previous applications were to build 13 dwellings in 1992 and 10 dwellings in 2001. These were refused planning permission and lost on appeal. Although the allotment space is for the use of social members of the club, it is a little local ecosystem that is part of our green infrastructure. Its presence

is helping to reduce pollution and allows biodiversity. It is a haven for insects, bats and birds and is acting as a natural soak away. And - it produces food!

If we want to protect and preserve the club and the allotments we need to be ready to object to the planning application when it is made. Details will appear on social media at the time or contact save.our.allotment.sw18@hotmail.com.

See our petition at www.change.org/save-our-allotment-SW18



ALLOTMENTS POSTER BY SARAH EDGEDALE

GILL HABERSHON

Southfields lost a much-loved local champion with the death of Gill Habershon on 13th June at Trinity Hospice, only 4 months after being diagnosed with an aggressive malignant brain tumour. Chair of the Southfields Business Forum for many years, she was a well-known figure on Grid streets. She campaigned to help our local shops and businesses flourish, whether it was dealing with the council, talking to the police about crime or sorting out the timing of waste facilities. With her husband John never far away they were a devoted couple who always had time for a chat in the street however busy they were.

Gill was born in St Leonards-on-Sea on 28th February 1945, the second youngest of six siblings. She had humble surroundings, without any of the things we now take for granted, as the house had no electricity, heating, or indoor plumbing. Her start in life was made more difficult with her feet not growing correctly, leaving her unable to walk from a young age. After many operations and losing years of schooling she was able to walk, but struggled with walking and pain in her feet all her life. She had very little education but was extremely good at Maths, loving mathematical puzzles. When small she was chosen to represent her school and make a presentation to HM the Queen.

Leaving school at 16 she worked her way up to become manager of a sub Post Office, before moving to Southfields in the mid 1970's to work for the Church Society. She met her husband John, a Civil Engineer, in St Michael's Church on Wimbledon Park Road. They married in 1978 and stayed in Southfields ever since, raising their two children James and Ruth.

Gill had a passion for politics, and has been involved in campaigning for the Conservatives since the mid-1980's. She eventually became vice-chairwoman of the local Conservative Association, and an essential part of the campaign for Justine Greening's first election as MP in 2005. Her main interest in politics was driven by her lifelong desire to make things better for people. She has worked tirelessly with local councillors, and now our MP Fleur Anderson, irrespective of party on issues important to Southfields even if not the party line, as people and local issues were always her priority. She also was very interested in the US political system as well as the UK's.

Gill, being a community minded person, formed a Coffee Morning for elderly residents in the area, along with Christmas drinks annually at their house for all who lived in Hambleton Road. Community spirit was always

her first love, and she worked tirelessly for the betterment of her local area. She occupied the posts of Chair, Vice-Chair, Treasurer and Secretary of the Southfields Triangle Residents Association (STRA) and when not she always remained on the committee as her input and knowledge were of immense value to the STRA.

Gill was a leading light in the Southfields Business Forum for many years with its aim to save and promote local businesses, encouraging everyone to shop locally. Gill worked tirelessly with the authorities, politicians, local schools, businesses and especially the All England Club in hosting the popular Southfields Christmas Lights every December. Most of her spare time was spent writing letters. She still kept in contact with a pen friend she had from school, and generally had friends in every corner of the world. The family were always getting messages from distant foreign places! Gill was also editor of The Bridge, a newsletter for old church friends in St. Leonard's-on-Sea

Sunny Patel, a colleague for many years, said "Even though I delivered papers to Gill for several years I got to know her when I joined the Southfields Triangle Residents Association (STRA) about 20 years ago I chaired the Business Forum for the first few years, but everyone was aware that the "main man" was Gill. She really felt for the independent shops when the multiples arrived. She fought for parking rights, challenged planning, advised and typed official letters. Gill took over as chair of the Forum two years ago and was always visiting the shops in all kinds of weather with John. Her legacy will be the Southfields Christmas Lights event each December, which has grown in popularity over the years. I will miss her, a true local icon and pillar of the community."

Gill is survived by husband John, children James and Ruth and two grandchildren. The funeral was held at Putney Vale Crematorium on Wednesday 7th July. Donations can be made to Trinity Hospice in memory of Gill Habershon. Donation envelopes can be collected and dropped off at John Walker grocer's at 5 Replingham Road or Original Fish and Chips at 253 Wimbledon Park Road. Online donations can be made via www.royaltrinityhospice.london/inmemoryof/gill-habershon



GILL HABERSHON, 1945-2021

HOMework IS THE FLEXIBLE WORKSPACE FOR 2021

HomeWork Workspace is the next generation solution to local, flexible working, a trend the Covid-19 pandemic has only encouraged. Situated on the site of the old Post Office at 265-269 Wimbledon Park Road, it combines the services and functionality of an office with the flexibility demanded by the new 'hybrid' way of working. The concept was cofounded by husband and wife, Sam and Claire Tucker over a few glasses of rose in summer 2018. It was borne out of their own individual, less-than-perfect, experiences of flexible working. "We felt passionately the current offerings just didn't hit the mark" says Claire "and we

wanted to do something that would better support individual and smaller businesses, enabling people to 'work from home' in an environment more conducive to work". With desks, power sources, high speed and reliable Wi-Fi, breakout spaces, printers and scanners, phone booths, meeting rooms and a fitness studio, HomeWork has all the facilities needed for a productive day's work.

HomeWork Southfields opened on Monday 5th July, and you can follow its progress on socials @homework_workspace and register your interest in HomeWork Southfields at www.homeworkworkspace.com/southfields-register

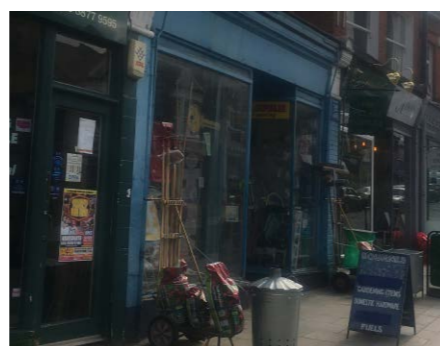


OWNER CLAIRE TUCKER IS ALL SET TO GO

SOUTHFIELDS BUSINESS FORUM UPDATE

We have been saddened by the recent closure of three well-known local businesses in Southfields. First was Mowersure on Brookwood Road, which closed on 27th May after over 20 years trading as their lease ended. Charles and Jenny Smitheman plan to enjoy their well-earned retirement. Then Bourne's Hardware shop at 30 Replingham Road shut its doors at the end of May. The shop has a fascinating history. By 1913 the site was already established as an ironmonger's shop. As far back as 1933 Kelly's Directory of Wandsworth was listing the proprietor as 'W. C. Bourne, ironmonger'.

It is a long-standing family business, with the current Mr Bourne saying he worked there for 55 years. Finally it came as a shock to learn that Starbucks on Replingham Road was to shut, with upset staff only being given short notice. Could it be a casualty of the coffee shop wars? Evidently the company said it was "because of high rents". One bright spot has been the opening of a second local nail bar. London Nail Clinic has opened in Replingham Road. At the bottom, Diyana's Grill is still closed, while the other empty units are as per the last update.



BOURNE'S HARDWARE HAS SOLD ITS LAST NAIL

LOCAL SURGERY NEEDS YOUR HELP

By Debbie Stone

Elborough Street Surgery Patient Group is being re-launched, and I am helping their Practice Manager Sam Metcalf to do this. The Patient Group has an important role in helping shape how medical services are delivered, and meets every two months to give feedback

from our 7,000 patients. We check how our response to the Covid-19 pandemic is going, and get to hear about and feedback on new initiatives such as the recruitment of three new paramedics who operate in conjunction with the other 5 surgeries in our area. The surgery has also recently launched their informative new website www.elboroughstreetsurgery.co.uk. They have also recruited new staff and revamped their appointment system. There are lots of other changes coming up as well. If you are interested in improving the medical service we provide, please join our panel by emailing samuel.metcalf@nhs.net.

co.uk. They have also recruited new staff and revamped their appointment system. There are lots of other changes coming up as well. If you are interested in improving the medical service we provide, please join our panel by emailing samuel.metcalf@nhs.net.

POLICE SAFER NEIGHBOURHOOD UPDATE

By PC James Ehy

There have been 3 burglaries in the Grid from April-June, and we have had 6 sheds broken into and bikes stolen mainly from front gardens. Make sure your bikes are locked securely if you have to leave them in any front garden storage sheds. Theft from motor vehicle also remains an issue, so please ensure you remove ALL belongings from view and

lock your vehicles. Amazingly some people still leave their cars unlocked when they park. The SNT has a new officer. PC Nuno Vaz will be with us until November, when we will get a new officer for another 6 months. As we have said before, if you see a crime occurring or see anything suspicious please call 999 or 101 first before putting things on Facebook, Twitter or Nextdoor. Thank you to all who attended our

new ward panel meeting on Friday June 25th. We shall hopefully be arranging some speed gun sessions with residents here in Southfields when we are able. Finally we would like to send our condolences to the friends and family of Gill Habershon. Gill did so much for the local community and business, and she will be sorely missed.

southfields@met.police.uk

SOUTHFIELDS LEADS THE WAY IN THE CENSUS

Remember the Census back in March? The once-a-decade event took place on Sunday 21st March, aiming to provide a snapshot of life in England, Wales and Northern Ireland, and which can be used to help make sure the right services are provided for people. The Census in Scotland takes place in 2022.

In the 2011 Census the national completion rate was 94% and in London 90%. so these became minimum targets for the 2021 Census. At the last count the completion rates for 2021 have easily passed these targets - 96.6% nationally and 95.6% in London. The completion rate for West Wandsworth was 97.2% and for Southfields. 97.9%. The Grid is likely to be even higher than that! For Southfields over 97% of completions were done online. The exact reasons for the better results are unknown, but lockdown and

the ability to complete the Census online are likely to have contributed.

Two residents of the Grid were active members of the Southfields team of 10 officers, including their team leader, who got such good results. Debbie Stone and Wayne Lee spent six weeks knocking on doors encouraging people to complete the Census form. The vast majority of people they spoke to were friendly, and grateful for the help they were being offered. "It was a fantastic experience" reflected Debbie, "and made me realise Southfields is a much more diverse and economically mixed area than I had realised". The next part of the 2021 Census is a random survey to check the accuracy of what people have said. Until this has been done the completion figures can only be considered as provisional.



WHAT THE WELL-DRESSED CENSUS OFFICER DEBBIE STONE WEARS!

LEARN ABOUT YOUR LOCAL TREE

By Chris Puleston, SGRA Treasurer

Have you seen labels popping up on trees in the Grid?

This summer we hope to encourage you to learn more about our trees by giving them a label that shows their common and Latin name, plus an interesting fact about the tree. "There are over 600 trees to identify and label, so it is a gigantic task" admitted Chris Puleston, leading the project along with our famous Green The Grid team. "Each label is numbered, and we plan to introduce a 'grid tree trail' for residents to follow later this year".

Serena Potter, our rep on the Wandsworth Tree Wardens group, loves the idea and

has been helping with labelling. She said "This is a super initiative, funded by the SGRA, which will teach adults and children alike a little bit more about the trees in our streets. It is also important to water them during the hotter summer months, especially if they have been newly planted this year, so please get out there with your watering cans and love your trees".

If you have any concerns about the wellbeing of a street tree on the Grid, contact Serena at sjpotter304@gmail.com or directly to the council officers at trees@enablelc.org



CHRIS AND SERENA AIM TO LABEL OUR TREES

HEDGEHOGS AND HEDGES

The SGRA has recently been alerted to a couple of issues to do with what's in our gardens. Can you help? Firstly hedgehogs. Not long ago there were many hedgehogs around the Grid. Often they could be seen late at night on local streets, going from garden to garden, foraging for food. Hedgehogs are now a rare sight. One reason for this is because the installation of high fencing with

concrete footers makes it almost impossible for them to climb over or burrow underneath. The result - hedgehog populations can become fragmented then extinct. To survive, hoggies need neighbourhoods of linked-up gardens and access to a wider area. What is needed, as is happening elsewhere, is for as many neighbours as possible to make a small gap in their fence at ground level to allow hedgehogs to move around. The size

of the gap would need to be about 13 cm x 13 cm, roughly about the size of a CD. Secondly, hedges. We were contacted by Mr B Timpson to say blind people struggle to navigate pathways across Southfields due to overhanging front garden foliage not being cut back, with paths becoming very narrow in places as a result. It would be appreciated if you can help by cutting your foliage back, and ensuring our pathways are kept clear.

YOUR LOCAL BUSINESS MARKETPLACE

Please mention Grid News when replying to these advertisements

Your eyes deserve the best care possible.



At **Vision in the Village** Opticians, we give advice that is **individually tailored** to your optical needs.

Book your eye examination today!

VISION
in the village

0208 874 1001
visionopticians.com

Follow us on
f i

Your friendly, local & experienced **Southfields independent Opticians** specialising in exclusive & stylish eyeglasses.

THE EARL SPENCER



HOME DELIVERY JUST EAT

20% off every Wednesday*

www.just-eat.co.uk




260-262 Merton Road, Southfields. SW18

*Offer ends August 31st, 2021, delivery partner just-eat.com, selected menu items only.

ZENITH
Dry Cleaners & Launderers
Est. 1982

Quality clothes deserve quality care

Silk • Satin • Sequins
Beading Ball Gowns
Wedding Gowns
Home Furnishings

Recommended Dry Cleaners by some of the top recognised Bridal makers

Ample parking at the corner of Pirbright Road

203 Replingham Road SW18
www.zenithdrycleaners.co.uk
020 8874 8651

yellowprint

SAME-DAY PRINT SPECIALISTS

DOCUMENT PRINTING
BROCHURES/MENUS/PLANS
FOLDED LEAFLETS/POSTERS
BOOKLETS/WIDE FORMAT
BUSINESS CARDS/INVITES
SIGNAGE/BANNERS/FLYERS
WEDDING STATIONERY

WWW.YELLOWPRINT.CO.UK
40 REPLINGHAM ROAD

 Our Lady Queen of Heaven Primary School

ourladyqueenofheaven.wandsworth.sch.uk
ptaylor@ourladyqueenofheaven.wandsworth.sch.uk
020 8788 7420

Places available in Nursery (full and part time) and other classes for September.

We are a Catholic Primary School that also welcomes families from other faiths and cultures.

Our School aims to develop the full potential of each child: spiritually, emotionally, intellectually, physically and socially.

We celebrate the uniqueness of each child.

Prospective parents are warmly invited to contact us directly to find out more and to join a tour.




Ofsted Outstanding

Our Lady Queen of Heaven Primary School, Victoria Drive, SW19 6AD

WHAT'S IN A SIGN? UNITED SERVICE TRANSPORT HISTORY REVEALED

By *SGRA executive member Clive Williams*

What does a 19th Century bicycle manufacturer, a major vehicle hire company and coach trips from London to the seaside have in common?

They all have a connection to the history of the building behind the Shell petrol station in Merton Road opposite Riversdale Primary School. This housed part of the fleet of motor coaches and commercial vehicles of 'United Service Transport Company Ltd' (UST) whose name is shown in the large green and gold Art Deco mosaic on the wall of the building. Established in 1919, UST's origins go back before motor vehicles.

In 1881 its founder Walter Flexman French, a keen cyclist, started making bicycles in Balham. Realising the potential of motor vehicles both as buses and for carrying goods, he set up a company in 1906 to supply commercial vehicles and drivers to firms on contract hire. Out-sourcing is nothing new! This company was the forerunner of UST.

Renowned as one of the pioneers of day trips by coach to the south coast, UST were known in the 1920's and 1930's as 'United Green' or 'United London'.

They also ran express services to coastal towns. Their goods vehicles were contracted to some well-known companies including Bass-Worthington, Colmans, GEC and the Evening Standard. Coaches were hired to Air France and KLM from the 1930's for travel to Croydon Airport.

Originally based in Balham, UST had a number of garages for their vehicles, Built in the late 1920's Merton Road garage housed 100 of their commercial vehicles.

Original access was from Merton Road, and there was a small open yard behind for vehicle storage. Burr Road had not yet been built. Three of their garages are known to have had these green mosaics. Merton Road's mosaic was installed by July 1933 when it appeared in a magazine article, and it is now the only surviving UST mosaic.

Coach operations ceased in September 1965, but goods vehicles operations continued until 1966 when UST was sold to the American vehicle rental company Hertz. They moved out by the early 1970's. The building was then used by two other companies, before becoming the Service Centre of luxury car dealer Jack Barclay in 2011.

The SGRA are keen to protect and preserve this attractive mosaic, and are working with civic society the Heritage of London Group www.heritageoflondon.org to source funding to restore the sign to its former Art Deco glory.



UNITED SERVICE TRANSPORT SIGN

ST BARNABAS CHURCH NEWS

By *Rev Ian Tattum*

With restrictions hopefully about to lift, when we are still in an era of uncertainty, our plans for the future are a bit hazy.

Church services are close to returning to the pattern of one at 9am and one at 10.30 am every Sunday, but as long as the church building is still required as a

vaccination centre we are minimising what we put on in the church during the week. It has been lovely to hear from couples who want to marry in the church this year, and baptisms are currently an almost weekly occurrence.

We were delighted that we were able to host a performance of Richard III on Saturday May 29th. AnyWhichWay Theatre is a new company of recent drama graduates

whose fresh and contemporary version gripped the audience throughout. The Ismena Collective, led by Mayda Narvey and Darris Golinski, will be performing one of their popular sets of words and music at 6pm on July 25th.

The Wandsworth Symphony Orchestra will be returning in November, too. We are hoping to put on a series of concerts and recitals during the summer, with dates to be announced.

RECYCLE MORE SOUTHFIELDS UPDATE

Since it started in January over 200 locals have joined the Recycle More Southfields group, to recycle crisp packets, pet food packaging and over 25 other types of hard-to-recycle materials. Over 250kg has been collected so far,

with over 40kg in June alone. It has been fantastic to see the community come together to get involved, and a big thank you to all the volunteers who have helped with the sorting and transportation.

If you would like to join in the recycling fun visit their website www.recyclemoresouthfields.org or contact dante.crowden@gmail.com

KNOCKOUT! LOCAL BOXING CLUB WILL BE A BIG HIT

By Charles Rancie

Southfields has its very own amateur boxing club - the Wandsworth Boxing Club. It is established at the Royal Marines Reserve Barracks, on the other side of Merton Road from the Grid. Originally called the Putney and Roehampton BC, it started by delivering non-contact boxing classes in Wandsworth schools, moving from Elliot School into a community centre in Roehampton for 6 years before the move to Southfields in June 2019. It trains men and women from age 9 upwards in a safe environment, both for general fitness and to compete in competitions against other amateur BC's all around the country.

The BC was founded and is run by Karen Horsford. Karen was the recipient of a Wandsworth Civic Award in 2019 for the great work she has done over the years to establish it. It is a family affair too, as Karen's son Nathan is heavily involved as both a boxer and judge and is also Head Coach. He also judges regularly on England Boxing shows both at local and competition level. The club has been very fortunate that mainly due to the support received from the Royal Marines (RM) they have been able to keep their heads above water. They boast a new ring, boxing bags, workstations and mirrors, and the venue has been totally repainted.

The Royal Marines Commanding Officer is Lt Col Olly Todd. He is proud of the relationship they have with the Boxing Club. "The RM Community Boxing Partnership is a grassroots youth initiative. It seeks to divert young people from disadvantaged backgrounds

away from violent crime, giving them a sense of purpose plus the opportunity to conduct robust disciplined physical training in a RM environment. In time I hope the steady stream of young men and women from Wandsworth results in more of them thinking about having a career in the Royal Marines."



ALISHA MOREHOUSE AND REAGAN BEASLEY TRAINING HARD

Karen adds "Our team never stand still and are always on the lookout for local boxing coaches to volunteers at the club. We believe boxing is for everyone, and trains both men and women aged 9-40. I would also like to take this opportunity to say thank you for all those people over the years that have supported the club. We are very proud to be a grassroots club working in partnership with the Royal Marines".

Wandsworth BC recently reopened its doors to the public and encourages the community in Southfields and surrounding area to join up by first by using the £8 trial session to do a taster session, then join the £45 per annum membership which allows you to join the classes for £4 a session. The club are also running girls/women only classes at St Barnabus Church on Saturdays:

12-1 pm - girls skipping and cardio classes

1-2 pm - women pad work and boxing circuit classes for beginners

2-3 pm - 121 boxing classes

If you want to join simply to keep fit, or aspire to become a boxer, please contact Karen on 07956 347238 or www.wandsworthboxingclub.co.uk. The club is also part of the Challenge South London, where young people can come along and try out new activities on Thursday 29th or Friday 30th July. Please register at www.challengesouthlondon.co.uk

There are also personal training sessions for children aged 10-16 at the Barracks, every day from 11-3pm during the school holidays.

LOCAL PLANNING NOTES

By Margaret Brett

It has been a relatively quiet time for local planning applications. The owners of 8a Replingham (The Old Bakery) want to change its use from an office to a 3 bedroom house. Elborough Street Surgery has obtained approval to construct a timber building in the back garden space as a rest area for staff.

There are a number of vacant shop frontages. Barclays, Sikelia, the old Sainsbury's, Haart's and Starbucks are all empty. Trieste is under offer, while Bulcraig's is undergoing development behind those hoardings until early 2022 into five flats, with a ground floor

shop retained. Contact Momo and Co if you're interested in opening one! The London Nail Club has opened, and the new HomeSpace business on the site of our old Post Office opened on July 5th. Mowersure has gone from Brookwood Road.

Work on the public realm improvements paused for Wimbledon. Much of the south part of Wimbledon Park Road has now been completed. Work to resurface the junction of Pirbright and Wimbledon Park Roads, including the installation of a 'Copenhagen crossing', was completed on time.

The new 'London Plan 2021' was adopted on 17th March and sets out policies about how

London will develop over the next 10 years.

Finally, from August 1st an application can be made for prior approval for any of our local commercial, business or services premises, regardless of where they are, to convert them to residential. This applies only to premises of 1,500sq.m. or less which have been vacant for three months and have been this type of premises use for two years. This national policy decision could result in a 'gap tooth' effect on our shopping frontages, changing the nature of our little parades. Please continue to support our local shops and businesses.

REFLECTIONS ON A 'DOUBLE SHIFT' AS WANDSWORTH MAYOR

By Jane Cooper

After two years as the Mayor of Wandsworth, I have now returned to being an ordinary resident of Southfields. But what a couple of years it was!

From May 2019 until March 2020, as your Mayor I was continually on the move, visiting every part of the Borough, and of course Southfields. So in July 2019 I was invited to picnic in Coronation Gardens, and in September to present the annual Front Garden Awards. I even helped switch on the Southfields Christmas Lights in December.

Then in March 2020 Covid-19 came along, and the Mayor was "grounded", so in April I was asked to be the Mayor for a second year. That meant in August I was able to present the Front Garden Awards for a second time and to enjoy Southfields Harvest at St Barnabas' Church Hall in September. When the second lockdown came, I had to use Zoom to be present at the Friends of Coronation Gardens 2nd AGM in April. Better that than not at all!

During May I was happily again able to appear in person. I was delighted to be in Coronation Gardens to present the Best Poem Competition Award, and a few days later to

personally thank the staff at Marks & Spencer in Wimbledon Park Road. My last 'official' visit to Southfields was to our Royal Marines, where I rode 100 laps around their parade ground on my bicycle to raise money for the Mayor's Charity (see picture) and that 40km trip raised about £4,000!

What really makes me proud to be a resident of Southfields is seeing the way in which we

have coped with the Covid pandemic. With so much mutual help and support thanks to the Grid Alliance, we really showed just what a great community we are. Finally, being a "local" I even had both my Mayoral Covid jabs at St Barnabas' Church Hall. The first one was even attended by the Borough Press Office ... although they were not vaccinated then, just me!



MAYOR JANE, HAVING A WHEELY GOOD TIME!

MEET, EAT, MAKE AND SHARE AT SOUTHFIELDS HARVEST

Organiser Elizabeth Lloyd Owen previews *The Grid's networking event of the year*

After an enforced break in 2020, Southfields Harvest returns to St Barnabas church on Saturday 25th September from 12-3pm. Look forward to being reunited with your favourite Southfields Harvesters, including Green the Grid, Abundance Southfields, Salt & Pepper, and enjoying all the glorious goodies SW18 has to offer. There will be Southfields bangers sizzling on the BBQ, local cider for sale, apple juice, honey, jam, allotment veg, home produce and cakes, accompanied by a soundtrack of live music.

If you perfected your sourdough and banana bread in lockdown, then bring it on, because The Bake-off is back. So too is Southfields' very own artistic favourite Jane Porter. She will be creating a community work of art in an afternoon with you. Plus

new for 2021, the Storyteller of Southfields will be spinning harvest tales. Meet the people in our neighbourhood who know what is happening and make stuff happen, from performing arts to protecting our local environment. If you have a community-minded idea to share with your neighbours, or have made produce you would like them to try, we would love to hear from you.

crew to welcome, direct or serve visitors on the day, or provide a bit of assistance with pre-event coordination, setting up, promotion and PR, please volunteer now to help us make this year's festival better than ever.

Thank you as always to Rev Ian Tattum and all at St Barnabas for throwing open their doors to Southfields Harvest once again, as well as, quite possibly continuing to be a vaccine hub for the neighbourhood. We have said it before and we will say it again - it is the most fun you will have in Southfields on a Saturday afternoon. See you in September.

To volunteer or get in touch email southfieldsharvest@gmail.com

Find us at www.southfieldsharvest.org.uk or @Southfieldsharv



We will be making full use of all indoor and outdoor spaces to keep everybody safe and ensure a smooth flow of Harvesters. On that front, if you would like to join our

YOUR LOCAL BUSINESS MARKETPLACE

Please mention Grid News when replying to these advertisements

LAERTIS INTERIOR DESIGN
• Southfields based •

Over 20 years experience.



All aspects of project management, decorating, building, soft furnishings and more. We can make your dream home become a reality!

kyralaertis@gmail.com 0208 874 0749
www.laertis.co.uk

CHALK

- * Gifts *
- * Cards *
- * Jewellery *
- * Toys *

Southfields' Aladdin's Cave!

Gifts & cards for everyone

Monday - Saturday 9:30 - 6:00
Sunday 10:30 - 4:30

41 Replingham Road
Southfields, SW18 5LT

www.chalkgifts.co.uk 020 8870 6125

OAKLEY LOCKSMITHS LTD

LOCKSMITHS KEY CUTTING FITTING SERVICE

MULT-LOCK AGENTS



020 8871 1238

81 Replingham Road, Southfields, London SW18 5LU

oakleylocksmithsLtd@hotmail.co.uk

ARKENSTONE WEALTH MANAGEMENT

How reassuring would it feel to know that you'll always be financially secure?

Find out how our financial plans can help you take more control over your money and your future.

Plan better. Live Better.

Contact Simon Ben-Nathan:
020 8371 0982

Arkenstone Wealth Management, Hyde Park House, 5 Manfred Road, London SW15 2RS

advice@arkenstonewealth.co.uk
www.arkenstonewealth.co.uk

Arkenstone Wealth Management Ltd is an appointed representative of the Sense Network Ltd, which is authorised and regulated by the Financial Conduct Authority.

DANIEL SMITH
CARPENTER AND SPECIALIST JOINER

Beautiful, bespoke carpentry including:

Alcove Bookcases • Cupboards
Wardrobes • Bookshelves • Sash Windows
Doors • Home Offices • Radiator Covers

Tel: 020 8874 5205 Mobile: 07950 251026
E-mail: daniel-smith1@hotmail.co.uk
48 Lavenham Road Southfields London SW18 5HE

Craughwell & Co
CHARTERED ACCOUNTANTS

Providing advice to individuals, partnerships and limited companies in Southfields since 1986.

84 Brookwood Road, SW18 5BY
020 8874 4217 | mail@craughwell.co.uk
www.craughwell.co.uk

Emmanuelle Waters
Nutritional Therapist
DipCNM, mANP, mBANT, mCNHC

Wanting to feel your best?

Issues with weight, bloating, fatigue, low energy, sleep, pain...

We can do it together!

Mind-body holistic approach to health - Diet and lifestyle changes
Tailored protocols, realistic & achievable goals

FREE 15-minute Health & Energy review

Book by 31st July and receive a special **10% discount** on all consultations & packages quoting SGRA-01

+44(0) 7788 444 199 info@biovitalnutrition.com www.biovitalnutrition.com



ABUNDANCE SOUTHFIELDS RESCUES LOCAL FRUIT

By Richard Konig

We are approaching harvest time for the apples and pears of Southfields, so time to dust off the Abundance project once again. There is a thicker layer of dust than usual this year, as our activities were so subdued in 2020, but we do have some plans and ideas and it is great to be back! If you are not aware of us, in short we collect fruit from trees in local gardens whose owners are either unable to do this or have too much fruit. We then sell the juice.

First we have a lock-up that is quite full of cider and cider vinegar we were unable to sell last year as a result of not being able to arrange many events. We really like selling at events and festivals where we can take the time to chat about what the project is about, as we offer tasters and sell the product - it is so not about money. With that in mind we are really happy to see that the Tooting Foodival is back on September 4th, and we will be there just as surely as we

will be welcoming the return of Southfields Harvest on September 25th. We will also be holding our cider and vinegar sale on Thursday July 22nd from 5.30pm onwards at the Southfields Lawn Tennis Club on Gressenhall Road. Make sure you come to the right club! Sign up to our newsletter below and follow us on Instagram to stay informed.

This is the time of year we would like to start hearing from people who would like to start sharing their fruit trees, or offering to help out with picking, pressing, fermenting, selling and promoting. We are also keen to get similar groups started in other parts of Wandsworth, so if you have a 'fruity friend' in Furzedown or further afield do let them know that they can count on our support if they want to start a group to reduce food waste and maintain biodiversity.

One plan that we would like to realise this year is to move towards zero carbon cider. Using glass bottles (please bring back the

empties!) obviously makes zero carbon rather unattainable but we can cut out the car journeys involved in collecting and distributing fruit around the borough by building or buying a "Fruit Bike" - either a trailer on a regular bike or a cargo bike. Anyone who knows about these bikes is welcome to drop us a line and advise on how to buy or build. Another ideal for the year is to work closer with other Abundance groups in the area. Abundance London in Chiswick are amazing at beautifying public spaces and growing vegetables. We make alcohol and vinegar. Abundance Wimbledon have a fantastic fruit day at the end of the season. We shall try luring them towards co-operation with some cold ciders when the weather warms up again.

To join our volunteer fruit pickers, offer fruit from your trees, or keep up-to-date on cider and vinegar sales events, sign up to the newsletter via www.abundancesouthfields.com and follow us on Instagram at [@abundancesouthfields](https://www.instagram.com/abundancesouthfields)

THE 'GOLDEN AGE' OF THE POSTCARD

With over 1,200 postcards of local areas in his collection, our SGRA Treasurer Chris Puleston picks three of his favourite Southfields views.

The golden age of the postcard coincided with the building of Southfields Grid. In 1903 it was estimated that 690 million were sold, of which only 250 million passed through the postal system. Postcards were used like texting is today. The efficient postal service with up to twelve deliveries a day enabled social arrangements to be made quickly, even on the same day. Here in Southfields, photographers such as John's of Tooting, Young's of Twickenham, Fuller's of Replingham Road and Parker of Brookwood Road provided postcards for local residents to collect and keep in touch with their friends and families.



Shops were on almost every corner of the Grid. This is the Bakery at 67 Lavenham Road.



The R33 British Rigid Airship first launched in March 1919 and flew over Southfields in that July.



A milkman from the Ashen Grove Dairy, based at 1 Station Parade Southfields, a street that no longer exists.

We hope you enjoyed this selection. If you want to know more about collecting postcards visit www.postcard.co.uk or email chrispuleston@gmail.com.

Chris is exhibiting more of his super collection at Southfields Harvest on Saturday 25th September.

YOUR LOCAL BUSINESS MARKETPLACE

Please mention Grid News when replying to these advertisements

R&S ROOFING SERVICE

All types of roofing carried out by experts

FULL GUARANTEE • FULLY INSURED



Mr S Burrage

020 8870 5260 • 07831 508321

46 Brookwood Road, Southfields, SW18 5BY

Ms Clean

weekly and fortnightly cleaning and ironing



T: 020 8393 6136
M: 07784 161 925
E: msclean@mail.com

www.ms-clean.co.uk

A1 Decorating


INTERNAL AND EXTERNAL WORKS UNDERTAKEN

QUALITY WORK AT AFFORDABLE PRICES

SAME DAY ESTIMATE SERVICE

www.A1decorating.co.uk
TEL: 0208 8711 070 or 07956 390 316 (24HR)
Email: A1decorating@aol.com

EDDIE O'DRISCOLL
CITY & GUILDS APPROVED ELECTRICIAN



Domestic and Commercial Inspections and Testing

Rewiring • Repairs

Tel: 020 8785 4610
Mobile: 0797 080 7249
eddieodriscoll18@hotmail.com

THOMAS THE BUILDER
the local builder you can trust

HANDYMAN • DECORATING • KITCHENS
BATHROOMS • TILING • FLOORS
CARPENTRY • FENCES • DECKING

020 8393 6136 • 07718 983543
thomasthebuilder@mail.com



calsurv
chartered surveyors



Calsurv is a small, local family-run Chartered Surveying Practice. We specialise in:

- HomeBuyer Surveys
- Planning
- Party Wall matters

Contact us on:
T: 02087883666
W: www.calsurv.co.uk
E: office@calsurv.co.uk

Ofsted
Outstanding Provider

Wimbledon Park
MONTESSORI SCHOOL

WE STILL HAVE SOME AFTERNOON SPACES AVAILABLE FOR SEPTEMBER 2021

Well established, independently run Montessori nursery school offering high quality education in a friendly and caring environment. Small classes with qualified staff ensure excellent levels of pupil contact.

Extra activities include sport, drama and music. Lovely outdoor garden.

206 Heythorp Street, Southfields SW18 5BU.
020 8944 8584 • www.wpms.co.uk

Please email Clare Collins for a visit clare@wpms.co.uk



Quintessential
AESTHETICS • BEAUTY • SKIN CARE

The Plasma pen is the worlds most advanced, non-invasive, skin lifting, skin tightening and rejuvenation device used to treat wrinkles, skin tags, moles and sagging skin.

www.quintessentialsouthfields.co.uk/plasma-pen



20% off all courses

quintessentialsouthfields@gmail.com

0208 870 7873
233 Wimbledon Park Road

2021 SGRA FRONT GARDEN AWARDS REVIEW

Gardening is thriving on the Grid, as there were more paving slabs being raised for planting purposes and extra pots. It was marvellous seeing new gardens being developed and, even when there is some paving, more space is being left for greenery and large plant pots. Another lovely trend is the increase in the number of sheds with sedum roofs. The sedum, amongst other things, attracts beneficial garden wildlife such as butterflies, ladybirds, and bees. Benches are making a welcome comeback. They make a garden homely and neighbourly, and when nobody was sitting on them we found flower laden pots or cats on them! It really made us happy to see that some people were growing fruit and vegetables alongside the plants and flowers. Could this be a sign of things to come?

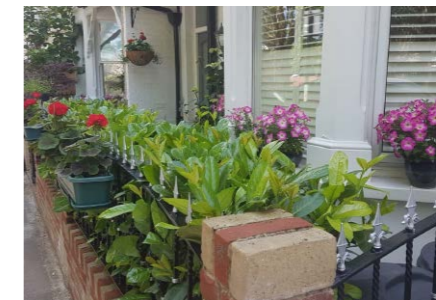
This year we gave out 94 bronze awards, 41 silver awards and 22 gold awards. Bravo to everyone who got an award! You saw the winner's garden on the front page, so here are the two runners-up.

90 Revelstoke Road



This feast of colour and joyfulness can be found on the corner of Revelstoke and Elborough Street. It is beautifully eye-catching with flowers abounding from the very ingeniously created 'drawers' at the bottom of the fence. Mehg, the gardener and brainwave behind this corner plot has flowers teeming from all the windowsills and on the pavement boundaries of her semi-detached house. She has found space for plants where none existed! It is the most fabulous use of space with daisies, sunflowers and lilies amongst others spilling out in all directions and accompanied by a gloriously abundant jasmine hedge whose rich scent intoxicates all the passers-by.

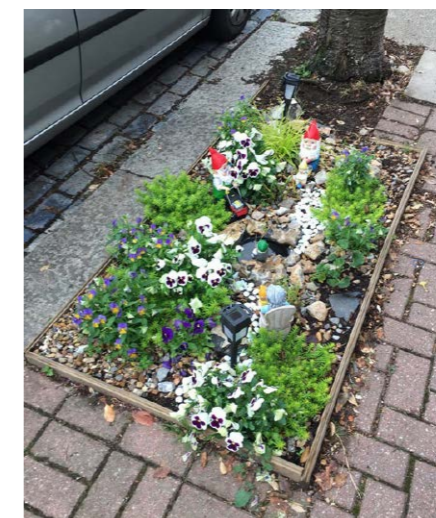
106 Pirbright Road



A very handsomely designed front garden which is small in size - in fact it is probably one of the smaller gardens on the Grid. Small gardens require more thought than larger spaces and, Gosia, the garden's designer, has created a perfectly formed space. An evergreen laurel hedge not only provides a backdrop for the garden colours, but it also gives a great level of cover for all sorts of nesting birds. Pink petunias adorn the windowsills and the front entrance which also has a wonderfully flowering Black Stem Hydrangea growing up the wall. The hanging basket thrills with vibrant red geraniums and yellow burst of marigolds. The geraniums are repeated in window boxes hanging off the railings. Fabulous use of space.

We also handed out 14 Best Individual Tree Planting Awards. In two roads, Astonville and Pirbright the judges could not decide on the best one, so it was a tie! On average, the streets with the best planted tree bases have just over 50% of the tree bases planted. There are some lovely, wonderfully uplifting planted tree bases so thanks to everyone who has been nurturing their tree bases so patiently and diligently. There is no one overall winner for the best individual tree-based planting but, here are a few street winners that you might like - two quite different styles!

Astonville Street



This one is located in Astonville Street. It is good to see the pixie family residing on the Grid! This one is such fun, it is quirky and tells a lovely, domestic story. The plants are well thought out. Alpine plants are a good choice as they are hardy and can cope with cold winters. The colour is provided by more seasonal two-toned flowers like the pansies. This base must attract both children and adults alike!

A very stylish and well-tended flower base in Elborough Street. It is a long, thin patch which looks newly adopted. There is a lovely combination of plant height and leaf shapes and textures. The elegant verbena, loved by bees and butterflies when in flower, will provide a contrast to the cheerful and easy to grow nasturtiums. These are intermingled with some geraniums and snapdragons amongst other flowers.

Elborough Street




Also this year we have given an award to the street with the best planted tree bases. This is a new category and the winner is Astonville Street. Very well done indeed.


'Spectacular Sunflowers of Southfields' - this wonderful community based fun event is ongoing as we go to print. There will be posters on your streets shortly reminding you that the judging for these will take place in mid-late August. We hope your sunflowers are faring well. We'll soon have an award winners map, compiled by our vice chair Gerard Sebastian. Finally thank you to all the gardeners, helping to make our Grid ever greener.

YOUR LOCAL BUSINESS MARKETPLACE

Please mention Grid News when replying to these advertisements



SOUTHFIELDS FOOTCARE
FOR ALL YOUR FOOTCARE NEEDS



SPENCER CHILDS BSc (Hons), MChS
HCPC Registered Podiatrist/Chiroprapist

**ROUTINE TREATMENTS • CORNS
CALLUS • VERRUCAS • INGROWING
NAILS • NAIL SURGERY • ATHLETES
FOOT • BUNIONS • ORTHOTICS
DIABETIC FOOTCARE • FOOT AND
ANKLE PAIN**

Southfields Footcare is a private podiatry practice situated in Southfields with a new state of the art clinic and waiting room. We are one of the first clinics to offer SWIFT, a pioneering new microwave therapy for the treatment of persistent verrucas and warts.

FOR AN APPOINTMENT CALL OR EMAIL

37 Replingham Road Southfields SW18 5LT
020 8870 3742
info@southfieldsfootcare.co.uk

www.southfieldsfootcare.co.uk



accountants | solicitors | architects | surveyors

COMPLEXITY SIMPLIFIED

Through our unique collaborative 3D approach, we deliver structured solutions for entrepreneurial businesses and individuals

ACCOUNTING & TAX
personal tax and wealth planning, financial accounting and corporate tax, SME business support, property

LEGAL
corporate & commercial law, property, wills, probate and estate planning

ARCHITECTURE
full architectural and interior design services

SURVEYORS
valuations, surveys, leasehold, party walls

info@zgrp.co.uk | 0208 944 1180
Ibex House, 162-164 Arthur Road, Wimbledon, London, SW19 8AQ




'Andy-Guy'
your local handyman service
www.andy-guy.com

07968 955 448 • 020 8874 4479

FOR ALL THOSE ODD JOBS YOU NEVER HAVE THE TIME FOR!
REASONABLE PRICES - HOURLY/DAILY RATE OR A FIXED PRICE - NO JOB TOO SMALL!

General Repairs & Property Maintenance • Decorating
Tiling • Plumbing • PC/TV/Network Problems
CCTV • Alarms/Entry Systems etc.

•••• **COVERING SOUTHFIELDS & WANDSWORTH** ••••
WELL KNOWN LOCALLY • RELIABLE & FRIENDLY SERVICE • FULLY INSURED



ADAM'S PLUMBING

With 25 years experience, working in the Southfields area, I undertake all household plumbing and heating jobs.

For a prompt call out, or to arrange an estimate, please contact me on:

07956 324460
adams_plumbing@hotmail.co.uk



- Design
- Landscaping
- Garden Maintenance
- Planting
- Installing lawn/artificial grass
- Fencing

Chris Hibbert 0779 559 7784
<https://www.primegardendesign.com/>
primegardendesign@gmail.com

THE OLIVE GARDEN

come and say hi
everyday 5pm - 10pm

reserve your table
020 8877 0411

special collection deal
£9.95 for most of the pasta and pizzas*
*some dishes are excluded



FRIENDS OF CORONATION GARDENS UPDATE - FROM POETRY TO PICNICS!

By Susannah Perry-Greene

It has been a busy old time in the Gardens! Recent improvements have included new seating, a noticeboard and a "bug hut" to encourage children to take an interest in the gardens. We also painted the historic old pavilion seating green. We were lucky to have a couple of students taking the Duke of Edinburgh award to help us. A new interpretation board for the Gardens will be installed over the summer, and more spring bulbs will be planted in the autumn by our Gardening Club.

In May, 8 year old Zach Medeiros won a poetry competition for local schoolchildren. Entrants were asked to compose a poem of not more than 100 words on a theme of "How does Coronation Gardens affect your senses?". Zach, a Year 3 pupil at Sheringdale Primary School, had imaginatively listed the many benefits of park life using the first letters of the Garden's name.

Zach won a £100 prize of Amazon vouchers donated by the Co-op's Local Community

Fund, receiving it in front of delighted parents and friends from the Mayor of Wandsworth, Cllr Jane Cooper. "He spends a lot of his time in this green space, and even more so since lockdown", explained his thrilled mother Erica Medeiros. "He recently moved schools from Riversdale to Sheringdale, so these Gardens have been such an important link between his two sets of schoolfriends. He loves reading, and also does a lot of performing arts".

The winner was modest in victory. "It took me about 56 minutes to write, and I had a little bit of help from Mum and Auntie", said Zach. What did he plan to do with his prize? "Spend it on materials for my arts and crafts work. I do a lot of it at school, drawing comics and making things with my friends".

The Friends were due to host the Annual free 'Summer Celebration' picnic on Saturday 3rd July, with local families enjoying live music and a skateboard demonstration while picnicking, but unsettled showery weather forced a postponement until a sunnier day.

You can enjoy reading all the poetry entries: www.focoronationgardens.co.uk/poems



OUR POETRY WINNER ZACH WITH MAYOR JANE

FRIENDS OF WIMBLEDON PARK SUMMER 2021 UPDATE

Away from the golf club development plans, there was a real chance that the 'Pines and Needles' site was going to undergo restoration in early May, later than expected. However, it has all gone wrong - again! The seeds were planted and have grown, but there are deep track marks on the site which are baked in!

The FoWP, together with Merton Tree Wardens, did a spot of weeding in the Memorial Copse recently. This area, especially the cornus (dogwood,) was being somewhat swamped by weeds. The cornus will still need pruning so its red stems remain attractive. Uncut areas have however been left nearby, to improve biodiversity and create interest. Sadly a couple of our lovely tree wardens, Jane and Peter, are moving away from the area shortly. They will be much missed.

Representatives from the FoWP and Southdean Gardens recently met the local police Safer Neighbourhood Teams. There have been ongoing problems of late night anti-social behaviour caused by groups of youths in Horse Close Wood. It was suggested that the fallen tree logs be moved. The logs

are grouped socially, making it easy for people to gather, sit, smoke, light fires etc. It is proposed that these logs be relocated elsewhere in the park. The police will also continue to patrol the woodland when on duty.

Work on the proposed Wimbledon Park Reservoir Safety Project will now start in October (it was initially August) with completion due in March. Access to the works should be via Wimbledon Park Road and Stadium Lane, not Revelstoke Road. The opening up ('deculting') of Wimbledon Park Brook is welcome, but we would like more streams opened up wherever possible. Meanwhile the lake gained some delightful new inhabitants, with our swans having a new family of six cygnets, although alas, one sadly died.

The All England Club's car parking plans over the tennis championships caused much concern and upset, as the car parking allocation was indeed increased. The FoWP wrote to Merton Council expressing our concerns at the lack of consultation and prior notification regarding this. Merton

Council's response is that they apparently have an existing contract with the Club which provides an allowance of up to 500 cars in the park. The 'additional space allowed for this year is to manage traffic flows safely'. According to Merton the public will have 'access to 63% more land than is usually available during the Championships.' The lack of consultation was not addressed. This may be a good time to consider whether the public park needs to be used as a car park during the Championships in the future.

A big thank you to the Capability Brown Society, one of our sister organisations, for organising the fun musical events in the park over the long Bank Holiday May weekend as well as during Wimbledon. Park visitors of all ages congregated outside Mario's Cafe basking in both the glorious weather and the music.

Our website is being rebuilt at the moment and so will be unavailable for a few weeks. Please follow us for now on both Facebook and Twitter at FriendsWP@FoWimbledonPark. For more information contact membership.fowp@gmail.com

Chairman: Charles Runcie | 020 8875 9565
charles@charlesruncie.co.uk

Vice-chair: Gerard Sebastian | 020 8877 2518
ggerard.sebastian@gmail.com

Secretary: Serena Potter | 07778 419569
sgrasecretary@gmail.com

Treasurer: Chris Puleston | 07715 054609
chrispuleston@gmail.com

Committee Members: Margaret Brett, Karen Gregory, Ann Kerr, Amelia Obertelli-Moriarty, Alise Veremeja, Clive Williams.

Street Representatives

Astonville Street
Lesley McCaul at 109

Brookwood Road
Karen Gregory at 140

Clonmore Street, Mid & North Blocks 1-79
Ann Kerr at 72

Clonmore Street, South Block 80-179
Nick Steiner at 116

Elborough Street
Chris Puleston at 164

Elsenham Street
Oliver Ashbee at 78
Andrew Dunley at 90

Engadine Street
Jackie Pearce at 18

Hamilton Mews
Charles Runcie at 17 Pirbright

Hanford Close
Karen Gregory at 140 Brookwood

Heythorp Street
Kyra von Schottenstein at 127

Langton Place
Karen Gregory at 140 Brookwood

Lavenham Road
Margaret Brett at 15 Elsenham

Merton Road
Tim Lynch
timothyedwardlynch@yahoo.co.uk

Pirbright Road
Charles Runcie at 17

Replingham Road
Alise Veremeya at 182

Revelstoke Road
Vacancy, volunteers welcome, please contact us.

Trentham Street
Amelia Obertelli-Moriarty at 169
Tania Kowalski at 91

MEMBERSHIP

The SGRA's financial and membership year runs from June 1st-May 31st, and donations are a minimum £3 annually, though we always are grateful for more! There are several easy ways to pay:

- Cash to your street representative, list above
- PayPal - Log in to your PayPal account:
treasurer@southfieldsgrid.org.uk
- BACS - our details are Barclays Bank, sort code 20-90-69, account number 83500020

If you wish to join our SGRA database we must have your consent, in order to adhere to GDPR regulations. You can do this either by ticking the consent box on the envelope which comes with this issue, or if paying online please email your consent to sgrasecretary@gmail.com to get our news and information.

LOCAL FACILITIES AND ORGANISATIONS

Business

Southfields Business Forum - sunny.p@talk21.com
Wandsworth Chamber of Commerce www.wandsworthchamber.org

Cultural

Singswell - www.singswell.co.uk
"Southfields storyteller" - www.hannahneed.co.uk
Sounds of Southfields - www.soundsofsouthfields.co.uk
Southfields Artists Group - via slavica@melrosead.net
Southfields Theatre Group - contact via www.facebook.com/southfieldstg
Southfields Sings - SouthfieldsSings@gmail.com
Window Wanderland - www.windowwanderland.com/southfields
World Heartbeat Music Academy - www.worldheartbeat.org

Faith

St Barnabas, Lavenham Road - www.stbarnabas-southfields.org.uk
Everyday Church, Wimbledon Park Road - www.everyday.org.uk/southfields
Ahmadiyya Mosque, Gressenhall Road - www.loveforallhatredfornone.org
Wimbledon Mosque, Durnsford Road - www.wimbledonmosque.org

Interest groups

Friends of Coronation Gardens - www.focoronationgardens.co.uk
Friends of Wimbledon Park - www.friendsofwimbledonpark.org.uk
Green the Grid - www.frontgardenfriendly.uk
Grid Mummies - jennifer@acertennislettings.com
Wandsworth Tree Wardens www.wandsworthtreewardens.org

Library

Southfields Library, Wimbledon Park Road - open Tuesdays, Wednesdays and Friday 10-5pm, Saturday 10-2.30pm

Nearby Resident Associations

Gardens RA - TheGardensRA@gmail.com
Southfields Triangle RA - senzbeth@hotmail.co.uk
Sutherland Grove Conservation Area RA - admin@sgcara.org.uk
Wimbledon Park RA - www.wimbledonpark.com

Police

If an incident is an emergency, ring 999 immediately. If not, ring 101.
Southfields - 0208 721 2434 or southfields@met.police.uk
Parks Police - 07500 814108 or parkspolice@wandsworth.gov.uk

Senior groups

Hestia adult support - www.hestia.org/older-people or 0208 767 8426
Monday Club, c/o St Barnabas Church - email ma_brett@hotmail.com
Wandsworth Older Peoples Forum - www.wopf.org.uk

Sport

All England Club - www.wimbledon.com
Swimbleton, wild swimming - www.swimbleton.co.uk
'Tag' Rugby - Jake.Dunley@hotmail.com
Wandsworth Boxing Club - www.wandsworthboxingclub.co.uk

Sustainability

Abundance Southfields - www.abundancesouthfields.com
Recycle More Southfields - www.recyclomore-southfields.org
Southfields Harvest - www.southfieldsharvest.org.uk

Forthcoming local events

Tuesday 27th July, 7.30-9pm, venue tbd - SGRA public meeting
Saturday 25th September 10.30am, St Barnabas - police ward panel meeting
Saturday 25th September 12-3pm, St Barnabas - Southfields Harvest
Tuesday 28th September, time and venue tbd - SGRA public meeting
Tuesday 30th November, time and venue tbd - SGRA public meeting

Next Issue

The autumn edition of Grid News will be published in mid-November. If you have a comment or contribution to make about any aspect of life in the Southfields Grid, we would love to hear from you. Send details to info@southfieldsgrid.org.uk but note the copy deadline is Friday 22nd October.